

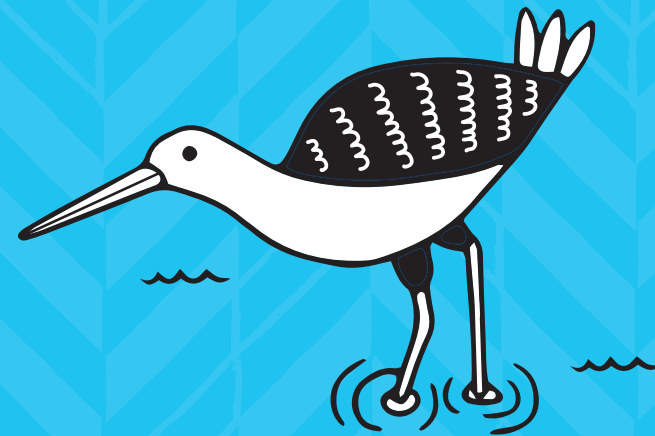
Nau Mai Haere Mai  
Van Harte Welkom  
Welcome



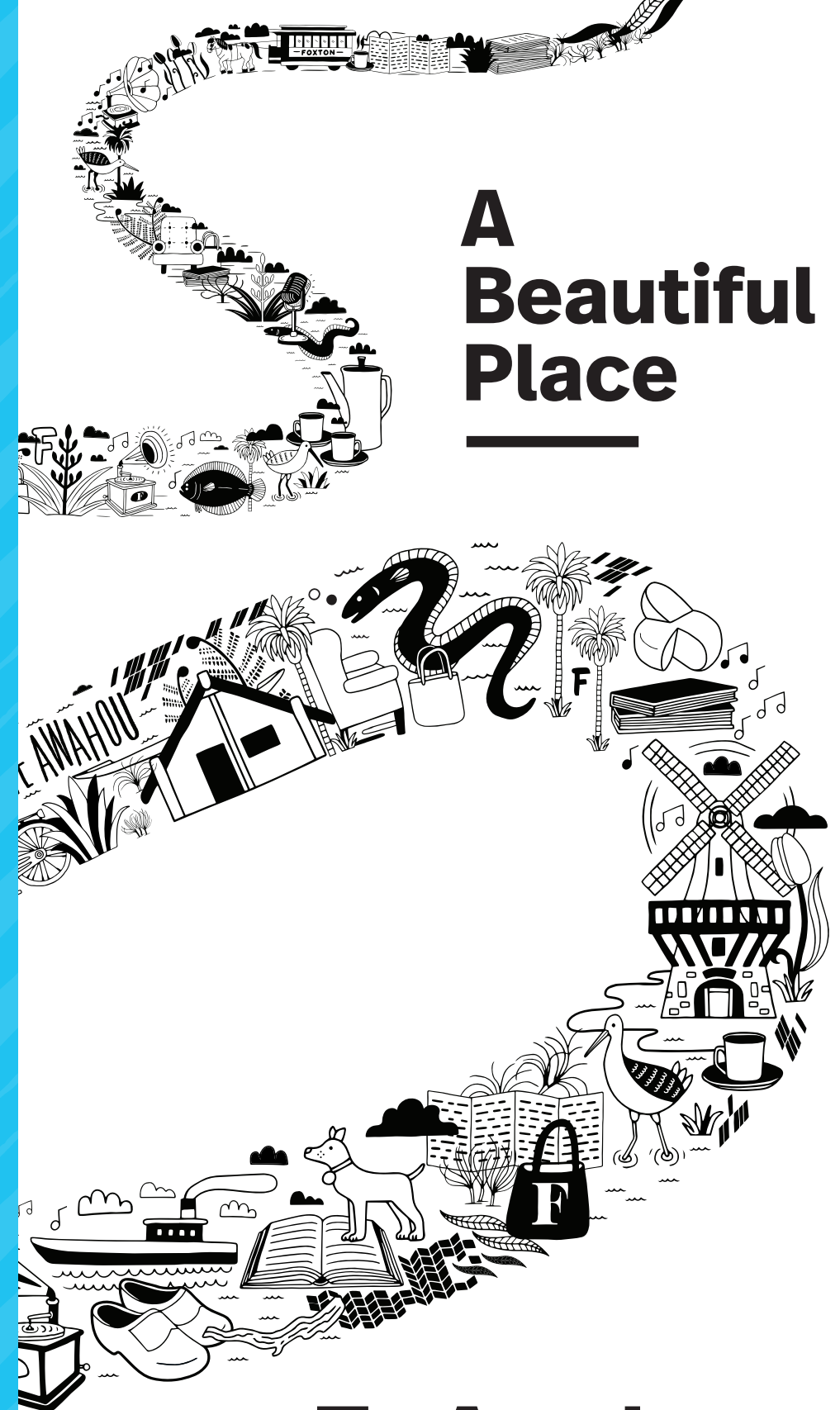
Winner – Project Excellence

## Contact

- f TeAwahouNieuweStroom
- teawahou.com
- @ enquiries@teawahou.com
- 06 363 5571
- 92 Main Street, Foxton



Horowhenua



# A Beautiful Place

**Te Awahou**  
Riverside Cultural Park  
Museums | Cafes | Taonga | Galleries  
Foxton

Open weekdays 9am–5pm  
Weekends 10am–4pm  
[teawahou.com](http://teawahou.com)

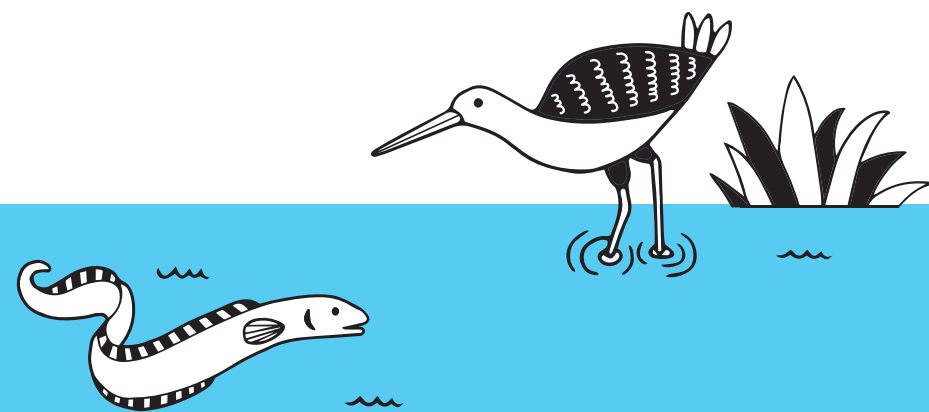


# Explore our Stories

Enjoy a fun day out, in a Cultural Park with lots of interactive, hands-on experiences.

Have a chat with the miller, the master carver and the local Foxton historian, or watch them ply their trades. Let the kids dress up in traditional costumes, or play with old wooden games. Find out why Foxton once was the Flax Capital of our nation.

The various attractions in the park reflect the beauty of a diverse country. Our small town, in its own unique way, offers a world-class heritage experience.



## Te Awahou Nieuwe Stroom

The centre-piece of the Cultural Park is the award-winning Te Awahou Nieuwe Stroom facility. Its exhibitions tell stories of Māori, Dutch and pioneering history in a beautiful setting.

The museums and displays let you reflect on your own whakapapa and family roots. The library with free wifi, and Millside café complete the experience.

Different strands of culture and language are woven together here – into one exceptional place.

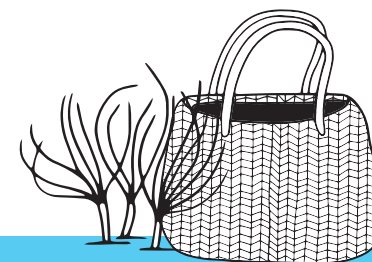


## Piriharakeke Generation Inspiration Centre

Travel back into the mists of time through digital displays, soundscapes and taonga. Experience pride of place and whakapapa, as you discover the story of the giant flax that clings to the riversides here.

Piriharakeke is a place for the arts and learning. It inspires the younger generations to continue the values, beliefs, rituals and traditions of the past.

Be captivated by the beauty and wairua of the space.



## Whare Manaaki – Māori Arts Studio

See the master carver or tā moko (tattoo) artists in action, and find out about the old traditions in this rohe.

The gallery and workshop let you experience how to craft a taiaha or patu.

Perhaps you'll get inspired to learn for yourself. Or you may want to order a customised taonga heirloom for yourself, or the whanau.

 [Foxton-Whare-Manaaki](#)



## Oranjehof Dutch Connection Centre

The stories of the 'Invisible Immigrants' let you explore Dutch cultural heritage – which can be found all over the country. Enjoy a delightful, colourful experience that's... gezellig, or cosy.

Oranjehof is a museum with a quirky sense of humour, all of its own. It tells our stories – ons verhaal – through treasures, our language, history, identity, culture, Nederlandse dingen.

Reflect on your own connections, in this centre-point for the Dutch community.



## De Molen – Working Windmill

The flour-grinding Molen was built with drawings from the 17th century. If you're keen to climb the steep stairs? The miller will tell you how it all works.

The noise, smells and the power generated on a windy day by the four blades – reaching some 30 metres into the air – are truly impressive!

The Dutch Deli sells stone-ground flour, Gouda kaas and tasty smoked sausages.

 [foxtonwindmill.co.nz](http://foxtonwindmill.co.nz)





# Lots to Do, Explore and Experience



**Café De Molen**  
Open 8:30am–3.30pm  
(most days)  
To check: 06 363 5601

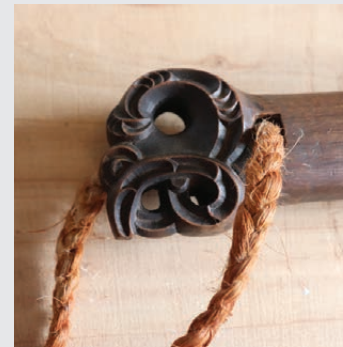


**Horse Drawn Tram**  
Rides on Sundays,  
weather permitting:  
11am–2pm. Tours any  
time by arrangement:  
Jayden Moore  
027 342 1869



**De Molen Windmill and  
Dutch Deli**  
Open 9am–4pm daily.  
Tours on request:  
06 363 5601

**Flax Stripper  
Museum**  
Open  
1pm–3pm  
daily or by  
arrangement



**Whare Manaaki  
Māori Arts Studio**  
Open daily.  
Educational workshops  
by arrangement




**Te Awahou  
Nieuwe Stroom**

Come and meet us – experience  
our stories – and share yours.



**Piriharakeke Generation  
Inspiration Centre** – Immerse  
yourself in the stories of Ngāti  
Raukawa ki te Tonga



**Oranjehof Dutch Connection  
Centre** – A delightfully colourful  
museum where all things Dutch  
come together

**Foxton Hub** – library, local  
heritage, river environment  
display, children’s activity area

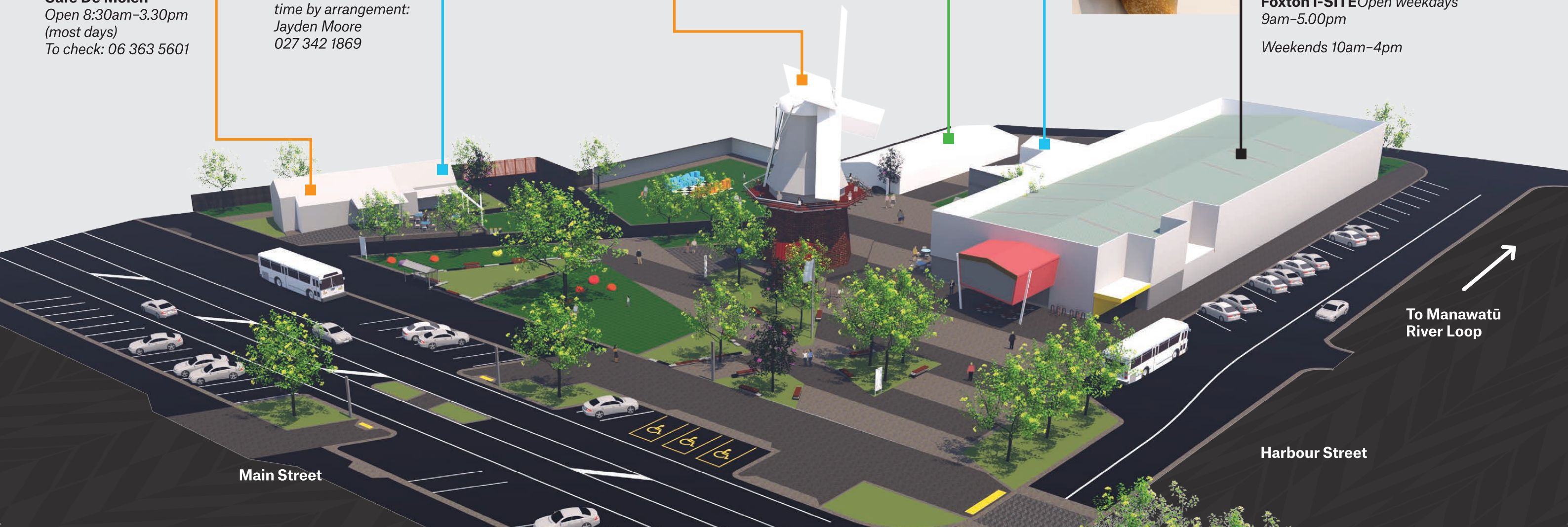
**Shared Gallery** – with exciting  
exhibitions

**Bookable meeting rooms**

**Millside Café and retail outlet**

**Foxton i-SITE** Open weekdays  
9am–5.00pm

Weekends 10am–4pm



Main Street

Harbour Street

To Manawatū  
River Loop